

**Searching NAVs
on the available
platforms.**



Product Operations

Bloomberg



Bloomberg DES Page

How to Access?

Type the unique ISIN
identifier for your series
i.e., **XS1688389995**

IACAPT 0 03/05/2021 Corp NWZR Related Functions Menu Message

Bloomberg Monday, June 28, 2021
Thank you for being a client since 2017
"Remember that how you say something is as important as what you say."
H Jackson Brown Jr

QuickTake
Bloomberg Markets
Bloomberg Businessweek
The Heist Issue

Read all about it.
Access to Bloomberg magazines is free with your Terminal subscription. Delivered to your inbox or your home.
[LEARN MORE](#) HDLV <GO>

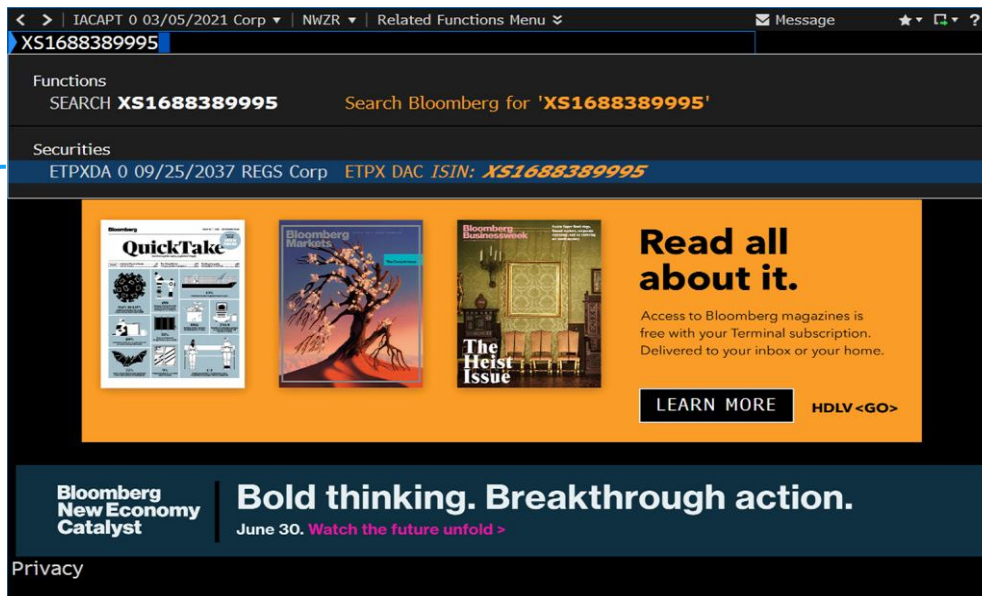
Bloomberg New Economy Catalyst
Bold thinking. Breakthrough action.
June 30. [Watch the future unfold >](#)
[Privacy](#)



Bloomberg DES Page

How to Access?

Select the security
related to the **ISIN**



The screenshot shows the Bloomberg DES (Data Entry System) page for the security XS1688389995. The page is dark-themed with a blue header bar. The header bar contains the navigation menu with options like '< >', 'IACAPT 0 03/05/2021 Corp', 'NWZR', 'Related Functions Menu', 'Message', and search icons. Below the header, the security identifier 'XS1688389995' is displayed in a blue bar. The main content area is divided into sections: 'Functions' with a search bar for 'XS1688389995', 'Securities' with details for 'ETPXD 0 09/25/2037 REGS Corp' and 'ETPX DAC ISIN: XS1688389995', and a promotional banner for Bloomberg magazines. The banner features three magazine covers: 'QuickTake', 'Bloomberg Markets', and 'Bloomberg Businessweek'. To the right of the covers, the text 'Read all about it.' is displayed, followed by a description of the access to Bloomberg magazines and a 'LEARN MORE' button. At the bottom of the page, there is a dark blue bar with the Bloomberg New Economy Catalyst logo and the text 'Bold thinking. Breakthrough action.' and 'June 30. Watch the future unfold >'. A 'Privacy' link is visible in the bottom left corner.

< > | IACAPT 0 03/05/2021 Corp | NWZR | Related Functions Menu | Message

XS1688389995

Functions
SEARCH **XS1688389995** Search Bloomberg for '**XS1688389995**'

Securities
ETPXD 0 09/25/2037 REGS Corp ETPX DAC ISIN: **XS1688389995**

Read all about it.
Access to Bloomberg magazines is free with your Terminal subscription. Delivered to your inbox or your home.
[LEARN MORE](#) HDLV <GO>

Bloomberg New Economy Catalyst
Bold thinking. Breakthrough action.
June 30. [Watch the future unfold >](#)

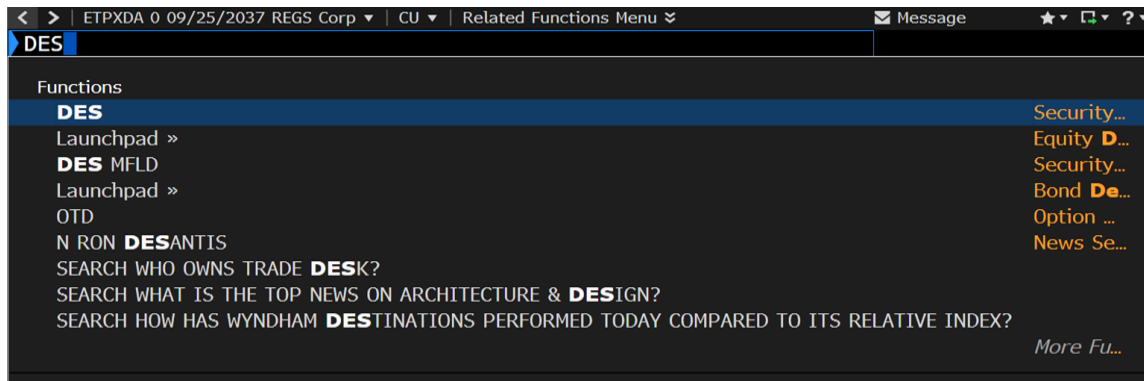
Privacy



Bloomberg DES Page

<DES>

Accessing to Series main page: Enter the function <DES>
then press **enter** key or <GO> in you Bloomberg keyboard



Bloomberg DES Page

<DES>

<div> CANC HELP SEARCH NEWS QUOT QUOT MSG MENU PRINT PG BA PG FV </div>									
<div> < > CIXINT 7 04/20/2030 Corp DES Related Functions Menu MSG: +1 ? </div>									
<div> CIXINT 7 04/20/30 \$120.560 + .400 120.560 / 120.560 .000 / .000 Source FXFD </div>									
<div> As of 30 Sep --X-- </div>									
<div> CIXINT 7 04/20/30 Corp Actions Settings Page 1/13 Security Description: Bond </div>									
<div> 94 No Notes 99 Buy 90 Sell </div>									
<div> 25 Bond Description 20 Issuer Description </div>									
<div> <div> <div>Pages</div> <div> 10 Bond Info 10 Addtl Info 10 Reg/Tax 10 Covenants 10 Guarantors 10 Bond Ratings 10 Identifiers 10 Exchanges 10 Inv Parties 20 Fees, Restrict 20 Schedules 20 Coupons 20 Impact Quick Links </div> </div> <div> <div>Issuer Information</div> <div> Name CIX CAPITAL INT DAC Industry Other Financial (BCLASS) Security Information </div> </div> <div> <div>Identifiers</div> <div> FIGI BBG00ZN800M4 ISIN XS2319865700 ID Number B05925462 Bond Ratings </div> </div> </div>									
<div> <div> <div> Mkt Iss EURO MTN Ctry/Reg IE Currency USD Rank Secured Series EMTN Coupon 7.000000 Type Variable Cpn Freq Quarterly Day Cnt ACT/ACT Iss Price 100.0000 </div> <div> Maturity 04/20/2030 MAKE WHOLE @590.000 until 04/20/30/ PUT 04/... Iss Sprd </div> </div> <div> <div> Calc Type (99)*NO CALCULATIONS* Pricing Date 03/15/2021 Interest Accrual Date 04/20/2021 1st Settle Date 04/20/2021 1st Coupon Date 07/01/2021 </div> <div> Amt Issued/Outstanding USD 125,000.00 (M) / USD 27,875.00 (M) Min Piece/Increment 200,000.00 / 1,000.00 Par Amount 699.06 Book Runner GWM-sole Exchange VIENNA </div> </div> </div>									
<div> <div> <div> 30 ALLQ Pricing 30 QRD Qt Recap 30 TDH Trade Hist 30 CACS Corp Action 30 CF Prospectus 30 CN Sec News 30 HDS Holders 60 Send Bond </div> <div> Suggested Functions GP Chart securities & technical studies GV See if yields are historically high/low </div> </div> </div>									



Bloomberg Historical Prices

<HP>

Accessing to Series Historical Prices: Enter the function <HP> then press **enter** key or <GO> in you Bloomberg keyboard



Bloomberg Historical Prices

<HP>


<div> CANC HELP SEARCH NEWS QUOT QUOT MSG MENU PRINT PG BA PG FV </div>									
<div> < > CIXINT 7 04/20/2030 Corp ▾ HP ▾ Related Functions Menu ▾ Today's News ? </div>									
<div> CIXINT 7 04/20/30 \$ ↑120.560 +.400 120.560 / 120.560 .000 / .000 As of 30 Sep -- x -- Source FXFD </div>									
<div> B0592546 Corp Export Settings Page 1/1 Historical Price Table </div>									
<div> CIXINT 7 04/20/30 </div>									
Range		10/29/2021 - 09/30/2022		Period		Monthly		High	
Market		Bid Px Ask Px		Currency		USD		Low	
View		Price Table		Source		FXFD		Average	
								Net Chg	
								25.940	
								27.41%	
Date	Bid Px	Ask Px	Date	Bid Px	Ask Px	Date	Bid Px	Ask Px	
12/31/22			12/31/21	95.790	95.790				
11/30/22			11/30/21	95.200	95.200				
10/31/22			10/29/21 L	94.620	94.620				
09/30/22 H	120.560	120.560							
08/31/22	120.160	120.160							
07/29/22	119.750	119.750							
06/30/22	111.330	111.330							
05/31/22	110.930	110.930							
04/29/22	110.290	110.290							
03/31/22	111.450	111.450							



Bloomberg

Frequent Issues

Pricing source: If you have problems finding the prices. Check the “Source” box and enter FXFD then press **enter** key or **<GO>** in you Bloomberg keyboard



The screenshot shows the Bloomberg terminal interface for the security B0592546 Corp. The 'Source' field is highlighted with a blue box. The interface includes a top bar with navigation icons and a status bar with 'MSG: +1'. The main display area shows the security name, 'Export' and 'Settings' tabs, and a 'Historical Price Table' header. The 'Range' is set to 10/11/2021 - 10/11/2022, 'Period' is Daily, 'Currency' is USD, and 'View' is Price Table. The 'Source' field is currently set to BGN. Below the settings, there is a table with columns for Date, Last Price, and Bid Px, which is currently empty.

Date	Last Price	Bid Px
------	------------	--------

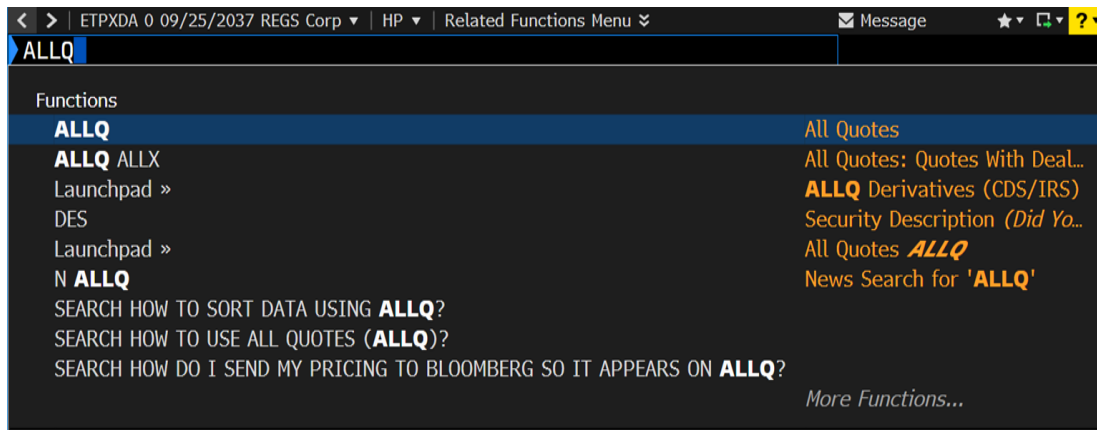


Pricing source: If you have problems finding the prices. Check the “**Source**” box and enter FXFD then press **enter** key or **<GO>** in you Bloomberg keyboard

Bloomberg

Frequent Issues

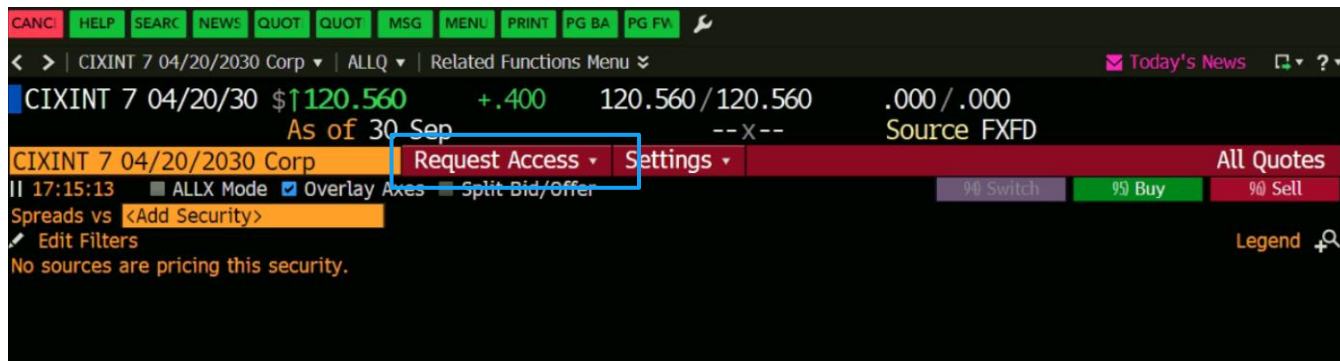
Pricing source: If you still have problems finding the prices. Check the function **<ALLQ>** then press **enter** key or **<GO>** in you Bloomberg keyboard



Bloomberg

Frequent Issues

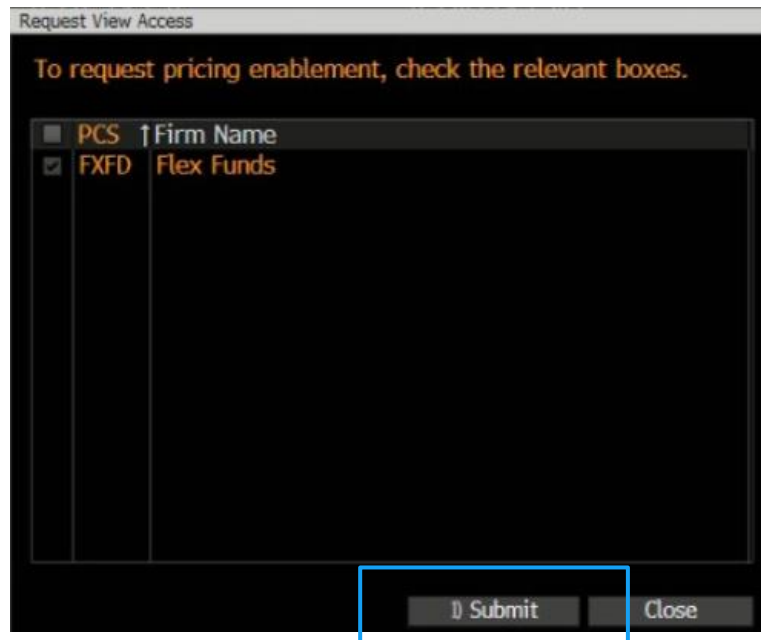
Pricing source: If you still have problems finding the prices. Check the function **<ALLQ>** then press **enter** key or **<GO>** in you Bloomberg keyboard
Next, select **“Request Access”** and then **“Request Access View”**



Bloomberg

Frequent Issues

Selecting **Submit** you will be able to find the prices and set it up permanently in **<HP>** function.



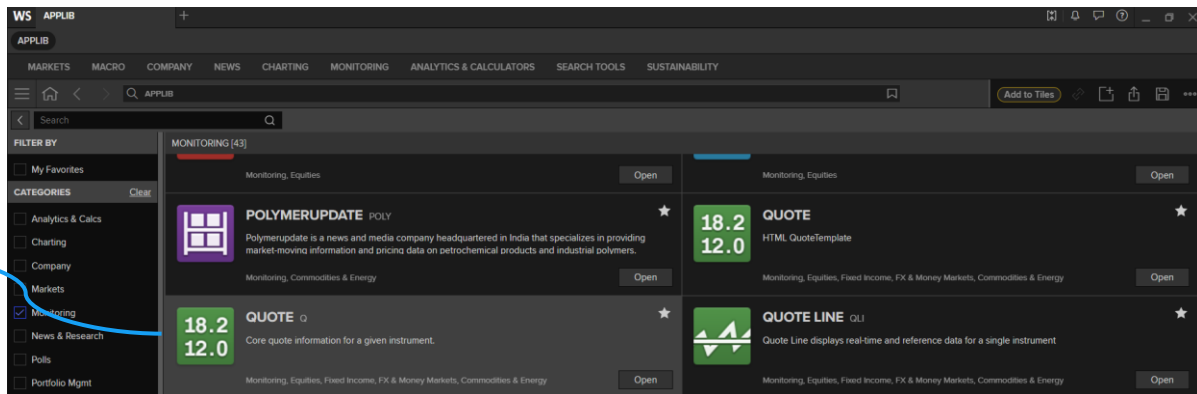
LSEG - Refinitiv Workspace



LSEG – Refinitiv Workspace

How to search prices?

Select the “Quote”
section on the App
Library



Once in the “Quote” section, type the ISIN of the series followed by the code “=FLXC”.

WS

XS2319865700=FLXC Q

+

APPLIB

MARKETS

MACRO

COMPANY

NEWS

CHARTING

MONITORING

ANALYTICS & CALCULATORS

SEARCH

≡

🏠

<

>

🔍 XS2319865700=FLXC Q

XS2319865700=FLXC USD Series 442

Latest

75.93

75.52

75.52

Size

x

x

x

Yld Net

Open

Cls 31MAR 75.93

STR

Yield :

20APR30 Bkg 0

Contributor Loc Time Date Source

FlexFundsLTD MIA 13:14 01APR

16:03 03MAR

16:01 03MAR

Offcl Code:

XS2319865700

Net

High

Low

Contact

e-mail

Phone

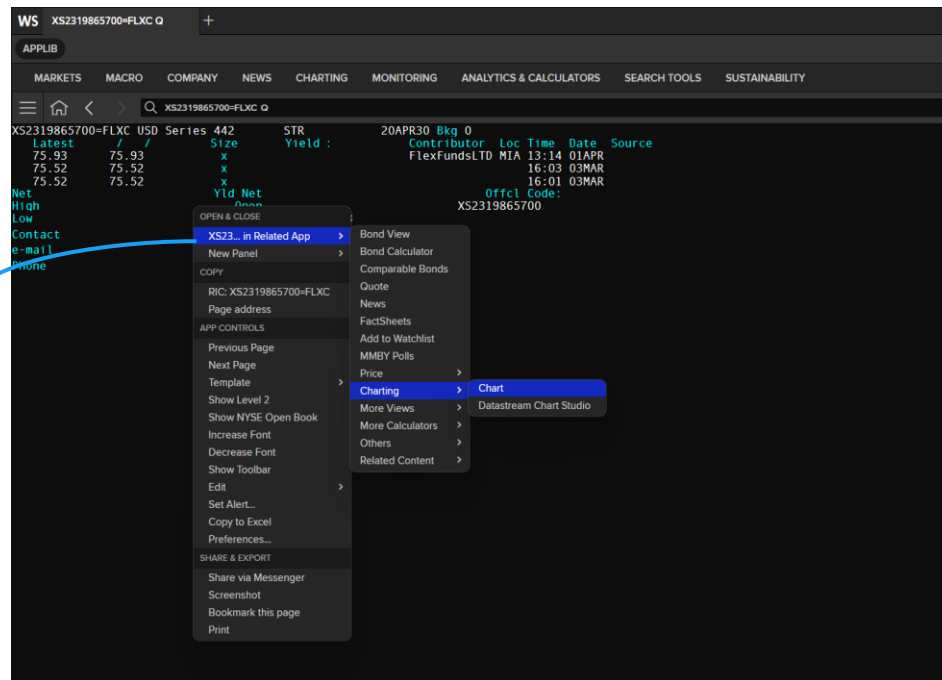
NOTES

39 M

LSEG – Refinitiv Workspace

How to search prices?

To see historical prices of the series:
Right click> Related>Chart



VSE



VSE

How to search prices?

How to search for FlexFunds' series on VSE

- Go to: <https://www.wienerborse.at/en/market-data/bonds/search/>
- Search by **ISIN** > go to **“Details”**> Select **“NAV”**.
- Anyone can access to VSE to consult information and prices without the need of a subscription.
- Clients without Bloomberg and/or Refinitiv subscriptions will be able to check their **series' NAV per Note** on VSE.
- In the section **“Notifications”** the series notices are published as well.



VSE

How to search prices?

wiener
boerse

[News](#)[Press](#)[About Us](#)[Update](#)[Deactivate Mini Charts](#)[DE](#)  [EN](#)[Login](#)[Market Data](#)[Indices](#)[Trading](#)[Listing](#)[Technology](#)

Vienna Stock Exchange | [Market Data](#) | [Search](#)

Bonds

Search | public sector | corporates prime | corporates standard | financial sector | performance linked bonds



VSE

How to search prices?

Market Data Indices Trading Listing Technology

Vienna Stock Exchange | Market Data | Bonds | Details

CIX AHS Multifam Inc (S. 442) (XS2319865700) - Details

Last	Chg. %	Chg. Abs.	ISIN	Date, Time	MPQ
-	-	-	XS2319865700	-	N

Quote | Order Book | Chart | Details | Historical Data

Prospectus | NAV | Notifications

ISIN	Date ↑	Ind. NAV (in %)	Chg. %
XS2319865700	07/29/2022	119.750	+7.56%
XS2319865700	06/30/2022	111.330	+0.36%
XS2319865700	05/31/2022	110.930	+0.58%
XS2319865700	04/29/2022	110.290	-1.04%



Morningstar



Morningstar

How to search prices?

How to search for FlexFunds' series on Morningstar

- Go to: <https://www.morningstar.at/at/>
- Search by **ISIN > go to "Chart"**.
- Anyone can access the Morningstar website to consult basic information such as prices prices without the need of a subscription.
- For a more comprehensive data availability on Morningstar, they offer Morningstar Direct, where users can access to qualitative and quantitative information about the ETPs and download the series memorandum.



XS2767955623

MORNINGSTAR

company website

Register

Login

Home

portfolio

funds

ETFs

Shares

markets

archive

tools

Overview

chart

total return

Rating and Risk

portfolio

management

fees

Sustainability

documents

Add to portfolio

definitions?

methodology

documents

disclosure

Abark Global Fixed Income (Series 518) Notes due 2044

USD Accumulation

To access our ratings, register here

How has this fund developed?

January 31, 2025

growth of 1000 (EUR)

1 128

1 104

1 080

1 056

1 032

1 008

984

2021

2022

2023

2024

2025

funds

+/-Cat

+/-Idx

0.9

-

-

Charts Advanced

Category: Bonds Other

Fund Benchmark: -

Overview

closing price

-

Change from previous day (in EUR)

0.38%

Morningstar Category™

Bonds Other

stock market

XFMQ

ISIN

XS2767955623

Fund volume (million)

-

Share class vol (million)

-

Running costs

-%

sustainability

Sustainability Rating

Issuer website



Issuers website

Every issuer has its own website.

The series issued under its respective issuer have all its relevant information displayed on its unique section.

To access the website, please click on the following link:

- HFMX: <https://hfmxdacseries.com/>
- ETPCAP2: <https://etpcap2dac.com/>
- IACAPITAL: <https://iacapitalplc.com/>
- CIX: <https://cixdac.com/>
- DCXPD: <https://dcxpd.com/>



Issuers website

The page is made up of three sections:

- **Series:** contains a summary of each of the series issued, highlighting:
 - Portfolio Management.
 - Strategy.
 - Performance.
 - Characteristics.
 - Documents.
- **About:** explain the service providers that the company works with, and the trading process of the series.
- **FAQs:** compile various potential questions from noteholders, customers, and potential customers.



Issuers website

XS2063500248

ITHACA INVESTMENT TRUST (SERIES 314) NOTES DUE 2024

NAV
106.83

Monthly NAV Change
+0.59 +0.56%

Year to Date Change
+1.06%

as of 8/31/2022

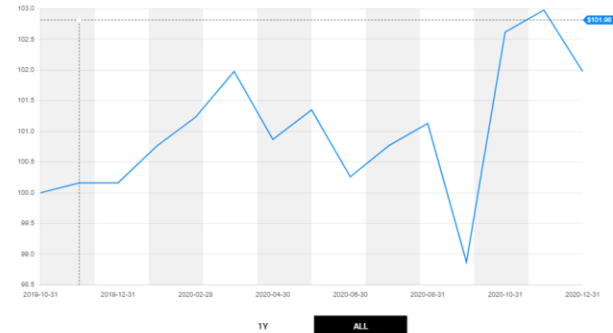
Portfolio

Strategy

Performance


Characteristics

1 M	3 M	1 Y	Since Inception	Vol.
+0.56%	-0.07%	-0.03%	6.83%	5.22%



TOP 10 Holdings





We greatly appreciate your collaboration and commitment!

Contact us

Product Operations

+1 (305) 767 2926

productoperations@flexfunds.com

Disclaimer Information



Without limitation, this information sheet does not constitute an offer or a recommendation to enter into any business relationship or transaction. It does not constitute any type of financial or legal advice. When making a business relationship or investment decision, you should rely solely on any final documentation or any series documentation relating to the business relationship or transaction and not this summary. Investment strategies involve numerous risks.

Entities should consult their own business, tax, legal and accounting advisors with respect to the products contemplated herein, and they should refrain from entering into a business relationship with us unless they have fully understood the associated risk and have independently determined that the arrangement is appropriate for them.

Neither FlexFunds nor any of the Issuers it serves as arranger for are financial advisors or fiduciaries of the recipient hereof or of any end-investors.

The referenced Exchange Trade Products ("ETPs") are issued by Irish domiciled companies established under Irish Law. The ETPs have not been registered under the United States Securities Act of 1933, as amended (the "Act") or the securities laws of any of the States of the United States. The ETPs may not be offered or sold in the United States or to U.S. Persons (as defined by Regulation S promulgated under the Act) unless they are registered under the Act, or an exemption from the registration requirements of the Securities Act is available. The ETPs are subject to certain United States tax law requirements.

The ETPs entitle the holder to receive a return linked to the performance of the underlying basket of securities that is actively managed by the series advisor. End-investors are therefore at risk that the performance of the product may cause any amounts payable under the product to be less than the amount paid for the ETP. Accordingly, investments into the ETPs bear market risk and investors are cautioned to take advice accordingly. The historical performance of any ETP should not be taken as an indication of the product future performance during the term of the product. The value of the investment may fluctuate and investors may not get back the amount invested. Investment risks from market and currency losses as well as high volatility and concentration risk cannot be excluded.